

moosso

Strategic PR and Communication

Media Contact

Barbara Musso | Moosso

barbara@moossopr.com

t. +39.02.3675.1875

Press Kit

bit.ly/AG_Destinations

Press Release - For immediate release



AGAPE *DESTINATIONS*

A JOURNEY INTO WONDER



Herdade da Malhadinha Nova Alentejo, Portugal – Exterior – Ph. João Guimarães



A guide to traveling with elegance

This new editorial publication
takes you on a journey across
the globe, exploring hospitality
architecture, where you can
experience Agape and its
bathroom designs

Wherever you go, immerse
yourself in a world of style
and harmony



*The Newt in Somerset Somerset, UK
Vieques bathtub by Patricia Urquiola
Ph. Courtesy of The Newt*

July 2024 - From the Mediterranean to Australia, from the heart of Europe to the Far East. Embark on a journey with **Agape** and its new editorial publication, **Agape Destinations**, the first in a collection that unveils hospitality architectures perfect for savoring landscapes, cities, and cultures. These are projects where Agape has left its unique mark. These locations reflect the spirit of an inherently international company deeply in love with the city of Mantua, where its roots lie. A company that has always cherished hospitality and warmth as core values.



Geographies of style

Agape Destinations is a guide to traveling with **elegance**, embracing the art of connecting deeply with various places and fully grasping and enjoying their beauty. This map invites you to take a leisurely journey, page by page, to discover **projects** crafted by some of the most inspiring **contemporary architects**. These destinations reflect the pleasure of harmony through Agape's **bathroom** designs,



Cool Rooms Atocha Madrid, Spain – Cuna bathtub – Ph. Fernando Alda

consistently created with a profound relationship to the space, naturally fitting and coherent with each location and architecture. Thus, a bathtub in the center of a suite invites you to wander with your gaze into the surrounding infinite nature, or a bathroom envisioned as an urban spa, becoming an oasis in the heart of a city of art.



Four different atmospheres

The volume, featuring graphic design by Roberto Barazzuol, is divided into four sections, each introduced by the whimsical illustrations of Marta Lonardi, creating four distinct travel atmospheres. **Remarkable Cities** takes you through art cities and ultramodern metropolises, where buildings and architecture capture the vibrant essence of various urban landscapes.

Mountain Hideouts inspires those who love high-altitude design, showcasing architectural refuges in harmony with the mountains, where well-being is found in the sky and silence.



from the top clockwise

- *Cool Rooms Atocha Madrid, Spain*
Ph. Fernando Alda
- *Miramonti Boutique Hotel Avelengo, Italy*
Ph. Tiberio Sorvillo
- *Il Gattopardo Lampedusa, Italy*
Ph. Courtesy of Il Gattopardo
- *The Newt in Somerset Somerset, UK*
Ph. Courtesy of The Newt

Mediterranean Time Off features timeless spaces for rejuvenation, embraced by the sound of water and the scents of nature, while **Meditative Escapes** presents secluded and remote architectures that breathe with the landscape. Concluding the volume, Travel Insights offers additional inspiring travel suggestions with Agape.



*“Projects that Agape
has helped to make unique”*





Press Kit
bit.ly/AG_Destinations

Multiple languages, timeless forms

Exquisite and visionary spaces, ancient and sumptuous palaces, brutalist buildings, and rural villas reimaged in contemporary style. In its global journey, Agape collaborates with numerous designers, each with a unique language and aesthetic signature. Together, they share a culture of good design and a dedication to enhancing the relationship between places and architecture. Agape showcases its talent for creating distinct wellness experiences, supported by Agape Studio, the company's in-house design laboratory for nearly 20 years, and by timeless forms that have emerged over more than 50 years of relentless pursuit of genuine wonder.

To request *Agape Destinations* , visit agapedesign.it

For press inquiries, interviews, and image requests, please contact:

Moosso – Strategic PR and Communication
agape@moossopr.com t. +39.02.3675.1875

Press Kit
bit.ly/AG_Destinations

Note to Editors

Agape



Agape has been synonymous with design culture for 50 years. The brand, founded by the Benedini family, offers hundreds of products that meet every functional need in the bathroom. Washbasins faucets, furniture, bathtubs, lights, and accessories designed by masters of contemporary design and architecture. Timeless objects that naturally develop an intense dialogue with any space, becoming elements of Agape's architectural vocabulary. International by nature, Agape also has deep ties to Mantua, the Renaissance city and extraordinary architectural workshop where its headquarters are located.

agapedesign.it

Agapecasa



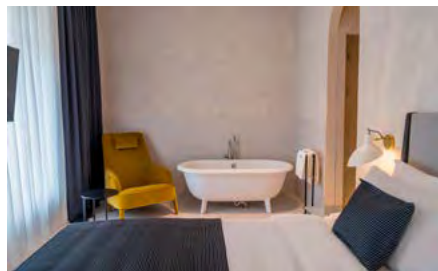
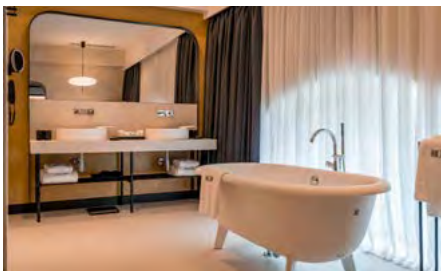
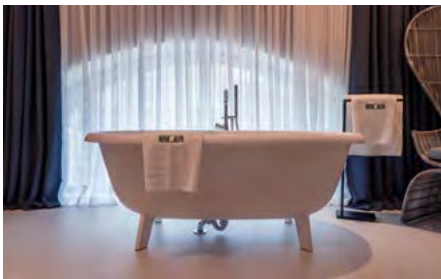
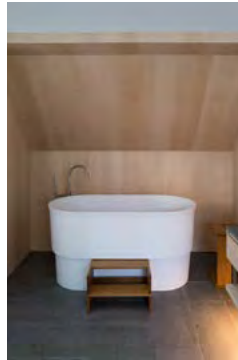
Agapecasa is the result of Agape's passion for design culture and longstanding collaboration with Angelo Mangiarotti. The brand was created to reissue timeless, original pieces by one of the 20th century's most multifaceted and interesting masters of Italian design and architecture. The Agapecasa collection includes tables, chairs, bookcases, and vases. Like all Angelo Mangiarotti's works, these pieces are the quintessence of good design: in his timeless furnishings, matter, form, technology and thought merge into a coherent and inseparable whole.

agapecasa.it



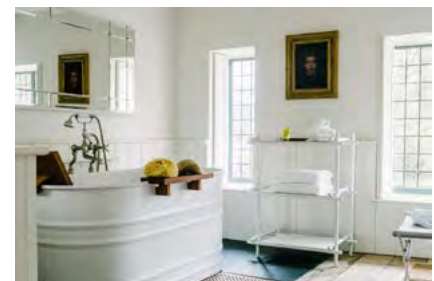
alongside:

- Miramonti Boutique Hotel Avelengo, Italy*
 1. Immersion bathtub,
 Ascension multi-purpose element
 2. Immersion washbasin and bathtub,
 Ascension multi-purpose element
 3. Swimming-pool
 4. Evo 21 - Litorale washbasin/countertop
 Ph. Tiberio Sorvillo



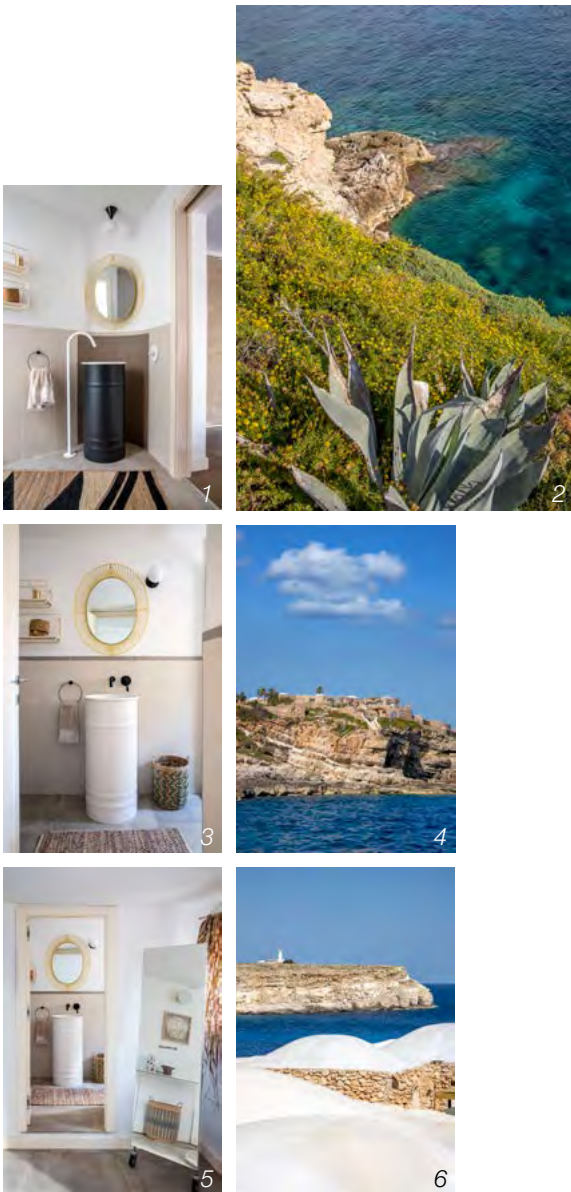
above:

- Hotel Monograph Freedom Square Tbilisi, Georgia*
 1. View of the building
 2.-4.-5.. Ottocento bathtub
 3. Lounge bar
 6. Stairs
 Ph. Courtesy of Proact



alongside:

- The Newt in Somerset Somerset, UK*
 1. Ottocento washbasin
 2. Vieques bathtub
 3. View of the building
 Ph. Courtesy of The Newt



above from left:

Il Gattopardo Lampedusa, Italy
 1.-3.-5. Vieques washbasin
 2.-4. Views from the terrace
 6. Roof of the building
 Ph. Courtesy of Il Gattopardo

above from left:

*Herdade da Malhadinha Nova
 Alentejo, Portugal*
 1. Courtyard
 Ph. Francisco Van zeller

4. Views of the building
 Ph. David De Vleeschauwer
 2.-3. Neb bathub
 5.-6.-7. Views of the reception facility
 Ph. João Guimarães



alongside:

Cool Rooms Atocha Madrid, Spain
 1. View of the entrance
 2. Cuna washbasin and bathtub
 Ph. Fernando Alda

